



## NETPLUS CONVERSIONS? LET KRYLON PRODUCTS GROUP HELP WITH THESE TOP MOVING PRODUCTS!



**LU103 Rust Breaker® Penetrant**  
**Uses:**  
 Rusted or frozen lugs and bolts, tight fitting parts, repair work, general overhaul, phosphated and non phosphated machined parts, automotive parts, crank shafts and other metal components.  
**Features:**  
 Quickly loosens rust, Will not harm painted surfaces. Non flammable, Penetrant, water displacer and rust inhibitor

**Aerosol: Mfg Part Number SC0103000**



**CD880 General Purpose Cleaner**  
**Uses:**  
 Counter-tops, finished wood, copy machines, windows, glass mirrors, vinyl, metal fixtures, chrome, glazed porcelain, leather, truck and car interiors, laminates, and spots on synthetic carpets.  
**Features:**  
 Works On All Surfaces, VOC Compliant, Streak Proof Formula

**Mfg Part Number - SC0880000**



**CD757 Heavy Duty Citrus Degreaser**  
**Uses:**  
 Tools, equipment, concrete floors, walls, Formica, fiberglass, wood, ceramic tile, aluminum, glass and some plastics.  
**Features:**  
 Biodegradable, Non Toxic, No Chlorinated Solvents Pleasant Citrus Scent.

**Mfg Part Number - SC0757000**



**LU711 The Protector All Purpose Lubricant**  
**Uses:**  
 All metal surfaces, nuts and bolts, operating controls, electrical wiring, ignition systems, circuitry, connectors.  
**Features:**  
 Penetrates & prevents rust, Displaces moisture & lubricates Contains no silicone.

**Aerosol: Mfg Part Number SC07110000**



**Tri Flow® Industrial Strength Lubricant**  
**Uses:**  
 Drive chains, Electric Power Tools, Gears, Glides, Cables, Nuts & Bolts, Ball & Socket Joints.  
**Features:**  
 Penetrates inaccessible areas to displace contaminants, Protects against moisture and corrosion damage; 60 F to 475°F

**Mfg Part Number - 6 oz Aerosol TF200251  
 12 oz Aerosol TF200271**



**PAINTER'S PREFERRED®  
 ACRYLIC LATEX CAULK**

Painter's Preferred is an economical general purpose product suitable for sealing multiple interior/exterior cracks and joints. Ideal for use on doors, windows and trim.

**For use on: Wood and Glass**

- Paintable
- Water Cleanup
- Interior/Exterior use

Meets ASTM Specification C-834, Grade NF



PRODUCT	COLOR	SIZE
W13000010	White	10.0 fl.oz.

**10% rebate on  
 new conversions**

**Contact your Class C  
 Representative to order today!  
 763.535.0400**

Distributed by:

**CLASS C COMPONENTS**

6825 SUNWOOD DRIVE N.W. RAMSEY, MN 55303  
PH 763-535-0400 FAX 763-535-1400



ISO 9001 Certified Company  
www.classccomponents.com  
Quality • Service • Versatility



# INVERTED MARKING PAINT

## KRYLON® INDUSTRIAL QUIK MARK™ WATERBASED INVERTED MARKING PAINT



- Main Markets:**
- ✓ Construction
  - ✓ Surveying
  - ✓ Excavation
  - ✓ Utility marking
  - ✓ DOT (Dept. of Transportation)

Part No.	Description	per case	Size	Net Wt
A03801004	APWA Utility Yellow	12	20 oz.	17 oz.
A03901004	APWA Brilliant White	12	20 oz.	17 oz.
A03903004	APWA Blue	12	20 oz.	17 oz.
A03612004	Fluorescent Pink	12	20 oz.	17 oz.
A03650004	Fluorescent Red/Orange	12	20 oz.	17 oz.
A03700004	Fluorescent Orange	12	20 oz.	17 oz.

\*\*\*OTHER COLORS AVAILABLE AT REQUEST

### AVAILABLE OPTIONS

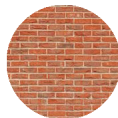
- Solvent-based and water-based formulas
- APWA & Fluorescent colors

### MARKING WANDS ALSO AVAILABLE

- K07095 - 12" Spotter Hand-held Wand
- K07096 - 34" Wheeler Hand-held Wand
- K07094000 - 34" Hand-held Wand with Flag Holder



### WHERE CAN IT BE APPLIED?



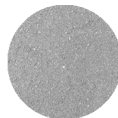
BRICK



GRASS



CONCRETE



PAVEMENT



GRAVEL



ASPHALT

Distributed By  
**CLASS C COMPONENTS**

6825 SUNWOOD DRIVE N.W. RAMSEY, MN 55303  
PH 763-535-0400 FAX 763-535-1400



ISO 9001 Certified Company  
www.classccomponents.com  
Quality • Service • Versatility

**10% rebate on  
new conversions**

**Contact your Class C  
Representative to order today!**

**763.535.0400**