



# APEX<sup>®</sup>

ASSEMBLY & FABRICATION TOOLS

CLASS C COMPONENTS

6825 SUNWOOD DRIVE N.W. RAMSEY, MN 55303  
PH 763-535-0400 FAX 763-535-1400

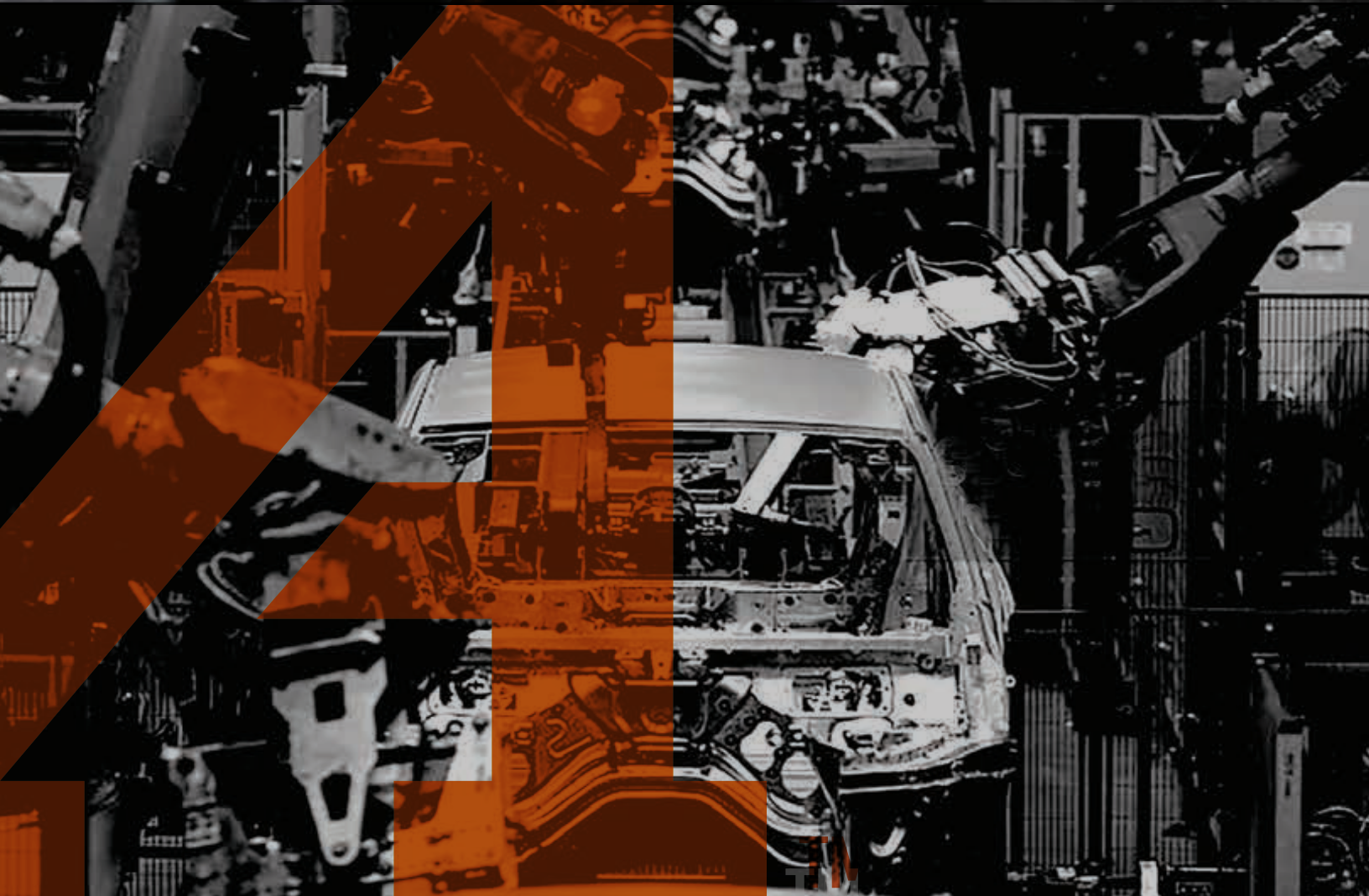


ISO 9001 Certified Company

[www.classccomponents.com](http://www.classccomponents.com)

Quality • Service • Versatility

## CUSTOM FASTENING SOLUTIONS



# INNOVATIVE CUSTOM SOLUTIONS

## **APEX SOLUTIONS TAILORED TO YOUR NEEDS**

---

Let APEX's in-house prototype department, backed by a state-of-the-art manufacturing plant, partner with you to develop a custom fastener drive tool designed to optimize your operations and ensure that your assembly line runs smoothly.

Since 1933, manufacturers around the world have relied on APEX to solve their critical fastening problems.

As the world-renowned specialist in developing screwdriver bits and impact sockets, we create innovative custom solutions for industrial assembly plants around the world.



## **GLOBAL INDUSTRY LEADER**

- The industry expert in developing customized, "hard-to-design" bits, bit holders, sockets, and universal wrenches
- Unparalleled experience: Thousands of custom products designed for our global customers

## **SUPERIOR PRODUCT QUALITY**

- Superior quality due to advanced engineering capabilities, proprietary raw materials, and consistent manufacturing process
- Value-oriented custom designs that provide the greatest strength and longevity in the industry
- Lower total cost of ownership, as Apex tools significantly outlast competitive tools

## **ADVANCED TECHNOLOGY**

- Latest solid-modeling and FEA tools used in product design
- 3D-printed ABS Thermoplastic prototypes can be ordered to confirm dimensions and fit
- Flexible machining processes allow for optimum handling of both small and large orders

## **SUPPORT WHEN YOU NEED IT**

- Dedicated applications specialists to ensure fast turnaround times on Custom Solution inquiries
- 24/7 production capability to respond in real time and support you in preventing downtime
- Expedited prototype delivery option available

# THE GLOBAL LEADER IN MANUFACTURING CUSTOM-BUILT FASTENER DRIVE TOOLS FOR INDUSTRIAL APPLICATIONS

## AUTOMOTIVE CASE STUDIES

### AXLE AND CHASSIS SOLUTIONS: BEVEL PINION CONNECTOR NUT

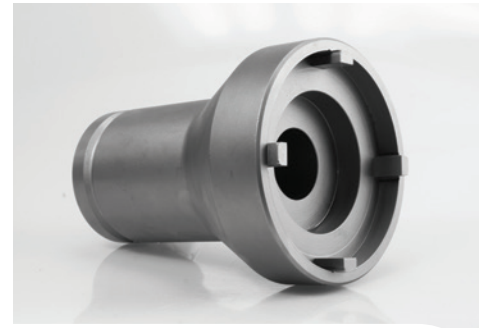
**PROBLEM:** Competitive socket had frequent breakage issues at the weld point.

**APEX SOLUTION:**

- Specially designed milled tangs mate with the connector nut

**BENEFIT:**

- Milled tangs provide greater strength and longer life than the welded option previously used



### DOOR AND WINDOW LINE ASSEMBLY AND INSTALLATION SOLUTIONS

**PROBLEM:** Productivity issues due to excessive bit breakage.

**APEX SOLUTION:**

- Developed a covered tool that reduced tolerance stack-up and ensured superior bit engagement with the fastener

**BENEFIT:**

- Improved productivity due to significant increase in bit life; increased safety due to addition of a free-spinning cover



### AUTOMATED APPLICATIONS

**PROBLEM:** Client had situations where the driver couldn't travel with the fastener as the fastener was run down.

**APEX SOLUTION:**

- Developed a collapsible spring-loaded socket that changes length during socket operation

**BENEFIT:**

- Great for multi-spindle situations where all fasteners may not have the same travel distance to complete tightening



## SOLUTION HIGHLIGHTS



### Plunger Style sockets

For retaining non-ferrous fasteners where magnets will not work



### Thermoplastic sockets

For pre-torque applications while protecting adjacent surface, eliminating marring, with a free-spinning cover

\*Cover Tool



### Delrin covers

Cover almost any tool in orange Delrin, to provide anti-marring properties and an added level of safety



### Slotted Electric Harness sockets

For applications where external wiring or other protrusions cannot be contained in a standard socket



### Prototype delivery

If you can't wait for standard delivery, we provide Prototype Delivery. Please contact us at 1-866-569-9449, by email at [SpecialQuote@apex-tools.com](mailto:SpecialQuote@apex-tools.com), or contact your local APEX BRAND SALES REPRESENTATIVE for obtaining a Custom Solution or Prototype quote.

# BECAUSE THERE'S A LOT ON THE LINE.™



## BIT | BIT HOLDER CAPABILITIES

- Longer lengths
- Special body diameters
- Special drive styles
- Special turn lengths

## SOCKET CAPABILITIES

- Specific lengths
- Special body diameters
- Different shapes + sizes
- Different magnetic styles
- All square drive sizes + styles
- All magnetic sockets come with rare earth magnets for greater magnetism

## UNIVERSAL WRENCH CAPABILITIES

- Different shank styles
- Different socket styles + lengths
- Different wrench ball sizes to solve clearance problems
- Tension or non-tension types

## 3-D PRINTED PROTOTYPE PARTS

APEX offers the option of ordering 3-D printed prototype parts, in thermoplastic material, to help you evaluate the design and confirm the fit to the fastener. Once you are satisfied, we can then manufacture the metal part for you.



## OBTAINING A CUSTOM SOLUTION QUOTE

*Please contact an Application Specialist or your local APEX representative to obtain a quote:*

- **Email:** [SpecialQuote@apex-tools.com](mailto:SpecialQuote@apex-tools.com)
- **Phone:** 1-866-569-9449 | 1-803-808-6745
- **Online:** <http://www.apex-tools.com/tools/custom-solutions>

# APEX

ASSEMBLY & FABRICATION TOOLS

DAYTON, USA  SINCE 1933

## APEX ASSEMBLY & FABRICATION TOOLS

762 W. STEWART ST DAYTON, OH 45417 | P/ + (800)845-5629 | E/ APEX@APEX-TOOLS.COM | W/ APEX-TOOLS.COM

### North America | South America

Apex Tool Group  
670 Industrial Drive  
Lexington, SC 29072  
Phone: +1 (800) 845 5629  
Phone: +1 (919) 387 0099  
[www.apex-tools.com](http://www.apex-tools.com)  
[Apex@apex-tools.com](mailto:Apex@apex-tools.com)

Apex Tool Group  
Manufacturing México  
S. de R.L. de C.V.  
Vialidad El Pueblito #103  
Parque Industrial Querétaro  
Querétaro, QRO 76220  
Mexico  
Tel: +52 (442) 211 3800  
Fax: +52 (800) 685 5560

Apex Tool Group  
Ind. Com. Ferram. Ltda.  
Av. Liberdade, 4055  
Zona Industrial Iporanga  
Sorocaba, São Paulo  
CEP# 18087-170  
Brazil  
Tel: +55 15 3238 3820  
Fax: +55 15 3238 3938

### Europe | Middle East | Africa

Apex Tool Group GmbH  
Industriestraße 1  
73463 Westhausen  
Germany  
Phone: +49 (0) 73 63 81 0  
Fax: +49 (0) 73 63 81 222

Apex Tool Group S.A.S.  
25 rue Maurice Chevalier  
B.P. 28  
77831 Ozoir-la-Ferrière  
Cedex, France  
Tel: +33 1 64 43 22 00  
Fax: +33 1 64 43 17 17

Apex Tool Group  
Hungária Kft.  
Platánfa u.2  
9027 Győr  
Hungary  
Tel: +36 96 66 1383  
Fax: +36 96 66 1135

### Asia Pacific

Apex Power Tool Trading  
(Shanghai) Co., Ltd.  
2nd Floor, Area C  
177 Bi Bo Road  
Pu Dong, New Area,  
Shanghai  
China 201203, P.R.C.  
Phone: +86 21 60880320  
Fax: +86 21 60880298

Apex Power Tools India  
Private Limited  
Gala No. 1, Plot No. 5  
S. No. 234, 235 & 245  
Indialand Global Industrial Park  
Taluka-Mulsi, Phase I  
Hinjawadi, Pune 411057  
Maharashtra, India  
Phone: +91 020 66761111