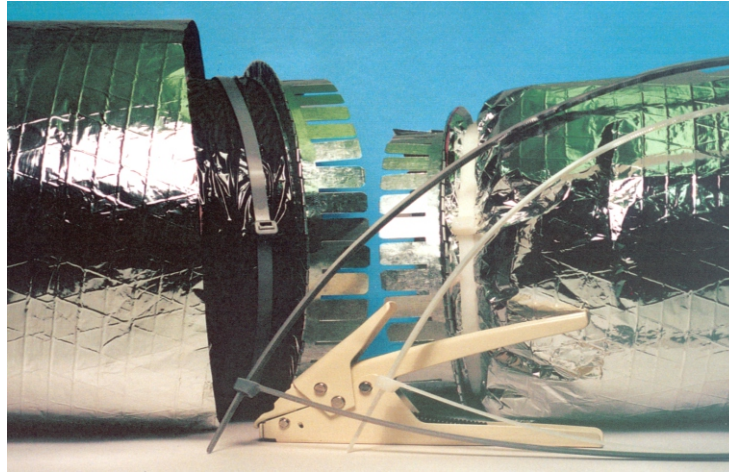


# HVAC DUCT STRAPS

**CLASS C COMPONENTS**  
 6825 SUNWOOD DRIVE N.W. RAMSEY, MN 55303  
 PH 763-535-0400 FAX 763-535-1400  
  
**ISO 9001 Certified Company**  
[www.classccomponents.com](http://www.classccomponents.com)  
 Quality • Service • Versatility

**ACT**  
 ADVANCED CABLE TIES, INC.



## HVAC DUCT STRAPS

- Easier - Angled tail provides quicker initial insertion alignment and tail finger grips allow easier handling and tightening
- Safer - Rounded edges provide added safety and eliminates insulation damage
- UL Listed for use with UL non-metallic air ducts and air connectors

ACT Part Number	Color & Material	Length Inch/mm	Width Inch/mm	Thickness Inch/mm	Tensile Strength	Bundle Dia Inch/mm	UL-CSA* Mil-Spec	Per Bag	Per Case
AL-36-175-9-L	Natural Nylon 66	37.25/946.1	.340/8.636	.090/2.286	175lb/778n	11.00/279.40	UL 181B-C MS3367-13	50	500
AL-36-175-0-L	UV Black Nylon 66								
AL-48-175-9-L	Natural Nylon 66	48.56/1233.4	.340/8.636	.090/2.286	175lb/778n	14.50/368.30	UL 181B-C MS3367-16	50	500
AL-48-175-8-L	Gray Nylon 66								
AL-48-175-0-L	UV Black Nylon 66								

\* Also rated UL & CSA Type 21 Positioning Device, and UL AH-2

### AL-300 Installation Tool



- Durable tension and cut off tool designed for larger cable ties (120 & 175 lb)
- Quickly tensions and cuts off excess strap
- No sharp protrusions to cause snags, cuts, or abrasions to cables, hoses, or user

**ACT**  
 ADVANCED CABLE TIES, INC.

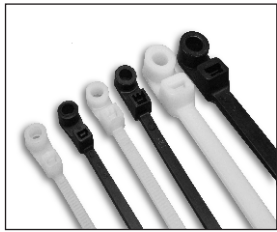


# Additional HVAC Products

## STANDARD CABLE TIES

ACT Part Number	Color & Material	Length Inch/mm	Width Inch/mm	Thickness Inch/mm	Tensile* Strength	Bundle Dia Inch/mm	UL-CSA Mil-Spec	Per Bag	Per Case
AL-04-18-9-C	Natural Nylon 66	4.12/104.77	0.09/2.41	0.04/1.06	18lb/80n	0.87/22.22	Type 21	100	10,000
AL-04-18-0-C	UV Black Nylon 66						MS3367-4		
AL-05-40-9-C	Natural Nylon 66	5.84/148.33	0.14/3.55	0.04/1.24	40lb/178n	1.43/36.42	Type 21	100	10,000
AL-05-40-0-C	UV Black Nylon 66						MS3367-5		
AL-07-50-9-C	Natural Nylon 66	7.56/192.07	0.18/4.57	0.05/1.32	50lb/222n	1.87/47.62	Type 21S	100	10,000
AL-07-50-0-C	UV Black Nylon 66						MS3367-1		
AL-11-50-9-C	Natural Nylon 66	11.25/285.75	0.18/4.57	0.05/1.32	50lb/222n	3.06/77.77	Type 21S	100	5,000
AL-11-50-0-C	UV Black Nylon 66						MS3367-7		
AL-14-50-9-C	Natural Nylon 66	14.35/364.49	0.18/4.57	0.05/1.32	50lb/222n	4.00/101.60	Type 21S	100	5,000
AL-14-50-0-C	UV Black Nylon 66						MS3367-2		
AL-14-120-9-C	Natural Nylon 66	14.82/376.63	0.30/7.62	0.07/1.93	120lb/534n	4.06/103.12	Type 21S	100	2,000
AL-14-120-0-C	UV Black Nylon 66						MS3367-3		

## MOUNTING HOLE CABLE TIES



ACT Part Number	Color & Material	Length* Inch/mm	Tensile Strength	Mech'l Strength	Screw Size	Bundle Dia Inch/mm	Per Bag	Per Case
AL-05-30-MH-9-C	Natural Nylon 66	6.12/155.57	40lb/180n	40lb/180n	#8	1.40/35.50	100	10,000
AL-05-30-MH-0-C	UV Black Nylon 66							
AL-07-50-MH-9-C	Natural Nylon 66	8.00/203.20	50lb/222n	45lb/200n	#10	1.87/47.60	100	5,000
AL-07-50-MH-0-C	UV Black Nylon 66							
AL-11-50-MH-9-C	Natural Nylon 66	11.50/292.10	50lb/222n	45lb/200n	#10	3.06/77.70	100	5,000
AL-11-50-MH-0-C	UV Black Nylon 66							
AL-14-50-MH-9-C	Natural Nylon 66	14.50/368.30	50lb/222n	45lb/200n	#10	4.00/101.6	100	5,000
AL-14-50-MH-0-C	UV Black Nylon 66							

\*6" COO: CN

## WIRE CONNECTORS



ACT Part Number	Color	Per Box	Per Case
AL-ACS-GY-C	Gray	100	1,000
AL-ACS-BL-C	Blue	100	1,000
AL-ACS-OR-C	Orange	100	1,000
AL-ACS-YW-C	Yellow	100	1,000
AL-ACS-RD-C	Red	100	1,000

COO: CN

**ACT**  
ADVANCED CABLE TIES, INC.



Advanced Cable Ties carries an extensive line of cable tie products and accessories.

Please visit our website or contact our Sales or Customer Service team for more information.

### STANDARD CABLE TIES

MINIATURE - 18 LB SERIES  
INTERMEDIATE - 40 LB SERIES  
STANDARD - 50 LB SERIES  
LIGHT HEAVY DUTY - 120 LB SERIES  
HEAVY DUTY - 175 LB SERIES  
EXTRA HEAVY DUTY - 250 LB SERIES  
MIL-SPEC  
COLORS  
CONVENIENCE PACKAGING

### SPECIALTY PACKS, KITS & COLOR ASSORTMENTS

### SPECIALTY CABLE TIES

DUAL LOOP SERIES  
MOUNTING HOLE SERIES  
FIR TREE SERIES  
PUSH MOUNT & PUSH MOUNT WING  
RELEASABLE - EXTENDED PAWL & TAB  
AIR HANDLING  
AIR HANDLING MOUNTING HOLE  
IDENTIFICATION & FLAG TIES, ID PLATES  
BEADED  
DOUBLE HEAD

### ENGINEERED MATERIALS

NYLON 12 - SOLAR  
COLD WEATHER  
HEAT STABILIZED  
IMPACT RESISTANT  
METAL DETECTABLE  
STAINLESS STEEL - UNCOATED & COATED

### TOOLS

REMOVAL  
INSTALLATION / TENSION

### CABLE TIE ACCESSORIES

MOUNTING BASES  
MOUNTS  
CLAMPS

### WIRE ROUTING & ABRASION PROTECTION

SPLIT LOOM  
SPIRAL WRAP

### CONDUCTIVITY

TERMINALS & WIRE CONNECTORS