

**Henkel –
Your worldwide partner**

LOCTITE®

New Anaerobic Flange Sealants

Loctite® 5188™ Ultra-Tough

Loctite® 5203™ Easy-to-Service



NEW Anaerobic Application Complete Solutions from Loctite®

Loctite® 50 ml-F Tube Squeeze Dispenser Item 1083845

Benefits

- Ergonomic handheld dispenser
- Reduces adhesive waste
- Reduces application time
- Smoother, more consistent flow output

Works with Loctite® 50 ml squeeze tubes



Loctite® Pivoting Gasket Roller Item 1271430

Benefits

- Improved ergonomics vs. other rollers
- Pivoting feature allows roller to follow gasket surface
- Decrease cycle time
- Increases throughput

Works with handheld 300 ml cartridges dispenser (item 97002) sold separately



Loctite® Screen-Form™ Gasketing System

Benefits

- Virtually eliminates misapplication
- Decreases cycle time, increases throughput
- Applies adhesive using a flange specific silk screen

Item 1271654 - Base system

Item 1271431 - Small silk screen, flanges up to 9" x 13"

Item 1271655 - Large silk screen, flanges up to 13" x 17"



**Visit www.equipment.loctite.com or
call 1-800-LOCTITE for more information**

U.S.A

HENKEL CORPORATION
Engineering Adhesives
1001 Trout Brook Crossing
Rocky Hill, Connecticut 06067
Tel: 860-571-5100
Fax: 860-571-5465
www.henkelna.com/industrial
www.henkelna.com/loctite

Canada

HENKEL CANADA CORPORATION
2225 Meadowpine Blvd.
Mississauga, Ontario, Canada L5N 7P2
Tel: 1-800-263-5043 (within Canada)
Tel: 905-814-6511
Fax: 905-814-5391

Mexico

HENKEL CAPITAL S.A. DE C.V. (MEXICO)
Boulevard Magnocentro No. 8 Piso 2
Centro Urbano Interlomas
52760 Huixquilucan, Estado de Mexico
Technical Product Assistance: Tel: 52-55-3300-3669
To place an order: Tel: 52-55-3300-3664
Fax: 52-55-3300-3019
www.loctite.com.mx

® and ™ designate trademarks, except where noted below, of Henkel Corporation or its affiliates. ® = registered in the U.S. and elsewhere.
© Henkel Corporation, 2009. All rights reserved. 5561/LT-5347 (2/09)

Distributed by:
CLASS C COMPONENTS
6825 SUNWOOD DRIVE N.W. RAMSEY, MN 55303
PH 763-535-0400 FAX 763-535-1400

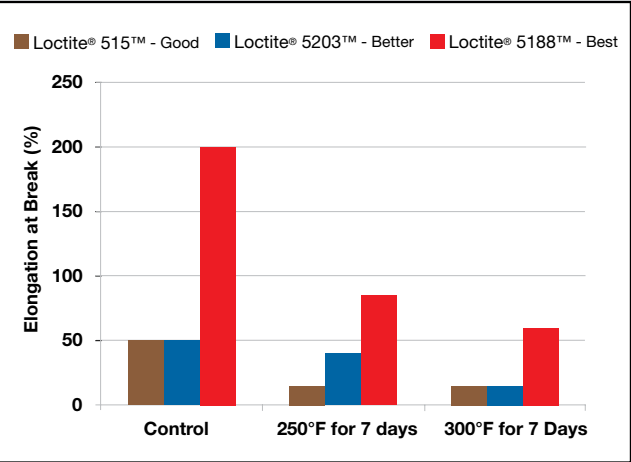
ISO 9001 Certified Company
www.classccomponents.com
Quality • Service • Versatility



From the **Global Leader** in
Anaerobic Technology Innovation

Loctite® 5188™ Ultra-Tough
 Ideal for large flanges and high stress applications

FEATURES	BENEFITS
Highly flexible, even after heat aging	Can tolerate micromovements on highly stressed flanges
Instant low pressure seal	Immediate in-line sealing tests possible
Oil tolerant	Cures through limited oil films
Excellent thermal resistance of cured product	Ideal for engine compartment applications
Excellent chemical resistance of cured product	Suitable for use with oils and coolants
Suitable for light-weight design flanges	Very good adhesion, especially to aluminum
Supports direct metal-to-metal flange design	Eliminates the need for shimmed flanges



Loctite® 5203™ Easy-to-Service
 Ideal for frequently serviced flanges

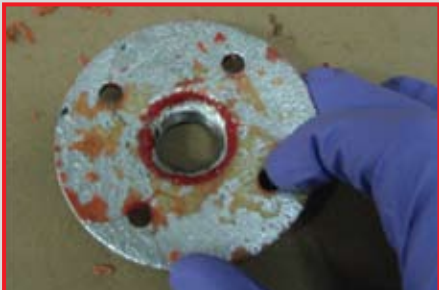
FEATURES	BENEFITS
Fully cured product easily removed from flange	Less damage to flange, shorter repair times
Can be removed without harsh solvents	Eliminates cost and hazards associated with harsh solvents
Can be removed without scrapping or sanding	Eliminates damage to flange
Instant low pressure seal	Immediate in-line sealing tests possible
Oil tolerant	Cures through limited oil films

Traditional Liquid Gasket

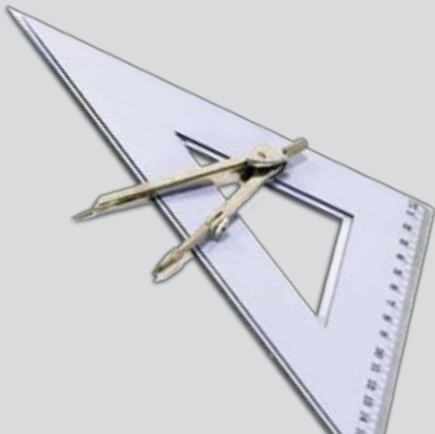


Hard to remove, even with a screwdriver

Loctite® 5203™



Easy to remove manually



Gasket Selector

	Rigid, Metal-to-Metal Flanges									
	Frequently Serviced Flanges		Large and/or High Stress Flanges		Portable Easy to Apply		General Purpose		Slow Cure	
Solution	5203™		5188™		548™		515™		573™	
Chemistry	Acrylic		Acrylic		Acrylic		Acrylic		Acrylic	
Cure Method	Anaerobic		Anaerobic		Anaerobic		Anaerobic		Anaerobic	
Color	Red		Red		Orange		Purple		Green	
Viscosity (cP)	50,000 to 100,000		14,000 to 32,000		Semisolid		275,000 to 950,000		19,000 to 60,000	
Cure Time	15 min to 6 hours		15 min to 6 hours		<3 hours		1 to 12 hours		6 to 48 hours	
Gap Fill (inches)	0.010" - Unprimed 0.020" - Primed		0.005" - Unprimed 0.010" - Primed		0.010"		0.010" - Unprimed 0.050" - Primed		0.010" - Unprimed 0.020" - Primed	
Temperature Range (°F)	-65 to 300°F		-65 to 300°F		-65 to 300°F		-65 to 300°F		-65 to 300°F	
Product Description	Loctite® 5203™		Loctite® 5188™		Loctite® 548™		Loctite® 515™		Loctite® 573™	
	Easy-to-Service Fully cured product can easily be removed from flange faces, particularly aluminum. Provides resistance to low pressures immediately after assembly of flanges. Seals close-fitting joints between rigid metal faces and flanges.		Ultra-Tough Provides a tough, resilient solvent and temperature-resistant seal that flexes with flange movements caused by vibration, pressurization, or thermal changes. Provides resistance to low pressures immediately after assembly.		QuickStix™ Patented semisolid formula is ideal for on-the-spot repairs or when a conventional gasket is out of stock. Can be applied quickly and neatly on a variety of metal surfaces, including aluminum, and forms a flexible solvent-resistant seal.		Gasket Eliminator Makes flexible gaskets for rigid machined flanges with less than 0.050" gap. Flexes when flanges move in service.		Long Open Time Seals close-fitting joints between rigid metal faces and flanges. Typically used as a form-in-place gasket on rigid flanged connections, e.g., gearbox and engine casings. The slow curing prevents premature curing on large parts and eliminates shimming of the flange.	
	Part Number	Package Size	Part Number	Package Size	Part Number	Package Size	Part Number	Package Size	Part Number	Package Size
	1241992	300 ml cartridge	1253203	50 ml	39151	9 g stick	51517	6 ml tube	26392	250 ml tube
			1241991	300 ml	39152	18 g stick	51531	50 ml tube		
					39153	37 g stick	51580	300 ml cartridge		
					1062184	30 g syringe				
1062185					300 g cartridge					

When should I use a Loctite® Primer?

Speed up cure – Significantly speed up the cure time of Loctite® anaerobics when assembling metal parts that are cold or have large gaps.
Inactive metal assemblies* – When assembling metal parts with inactive surfaces, Loctite® primers are recommended to ensure proper performance of Loctite® anaerobics.

Please note: Loctite® Anaerobic Machinery Adhesives cure in the absence of air and presence of metal ions. When assembling inactive metal parts, which are low in metal ions, the use of Loctite® Primers are recommended to ensure proper performance of Loctite® Anaerobic Machinery Adhesives.

www.useloctite.com

INACTIVE METALS* (PRIMERS RECOMMENDED)		ACTIVE METALS (PRIMERS OPTIONAL)
PLATED PARTS	SILVER	IRON
ANODIZED ALUMINUM (ALODINE, IRRIDITE)	GOLD	PLAIN STEEL
TITANIUM	ZINC	COPPER
STAINLESS STEEL	PURE	BRASS
GALVANIZED STEEL	ALUMINUM	BRONZE
MAGNETITE STEEL	CADMIUM	NICKEL
ICONEL®	MAGNESIUM	MANGANESE
	NATURAL OR CHEMICAL BLACK OXIDE	MONEL®
		KOVAR®

HELPFUL HINTS